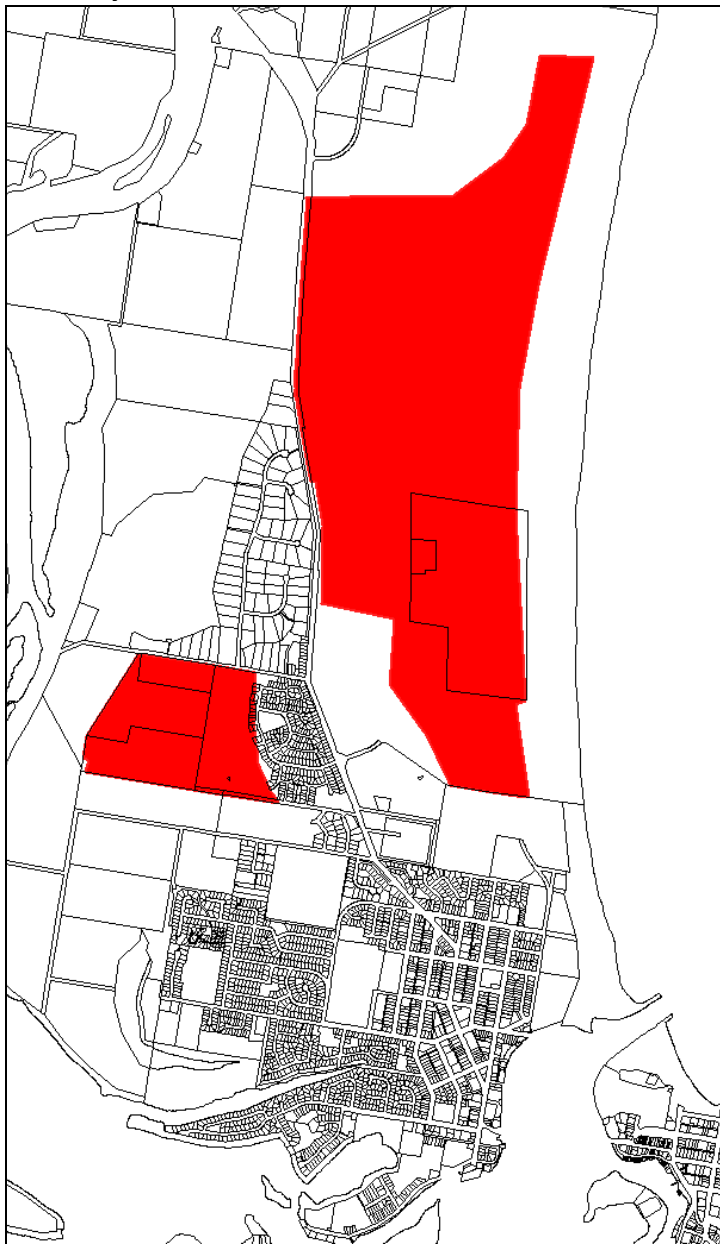

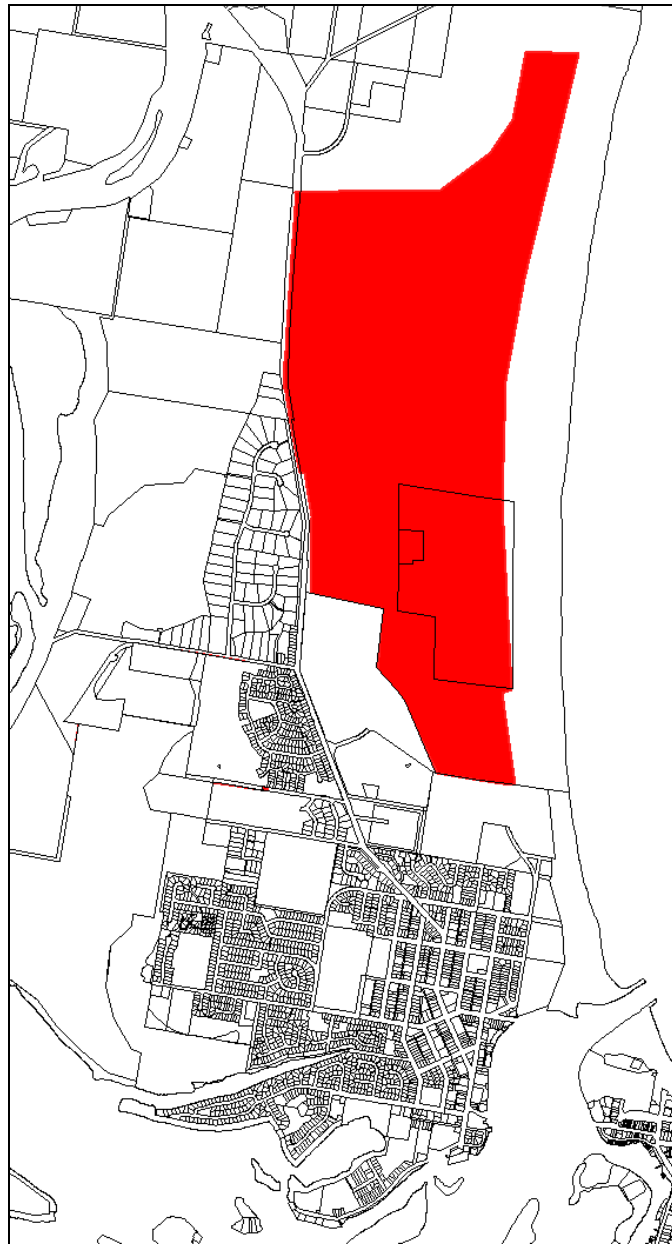



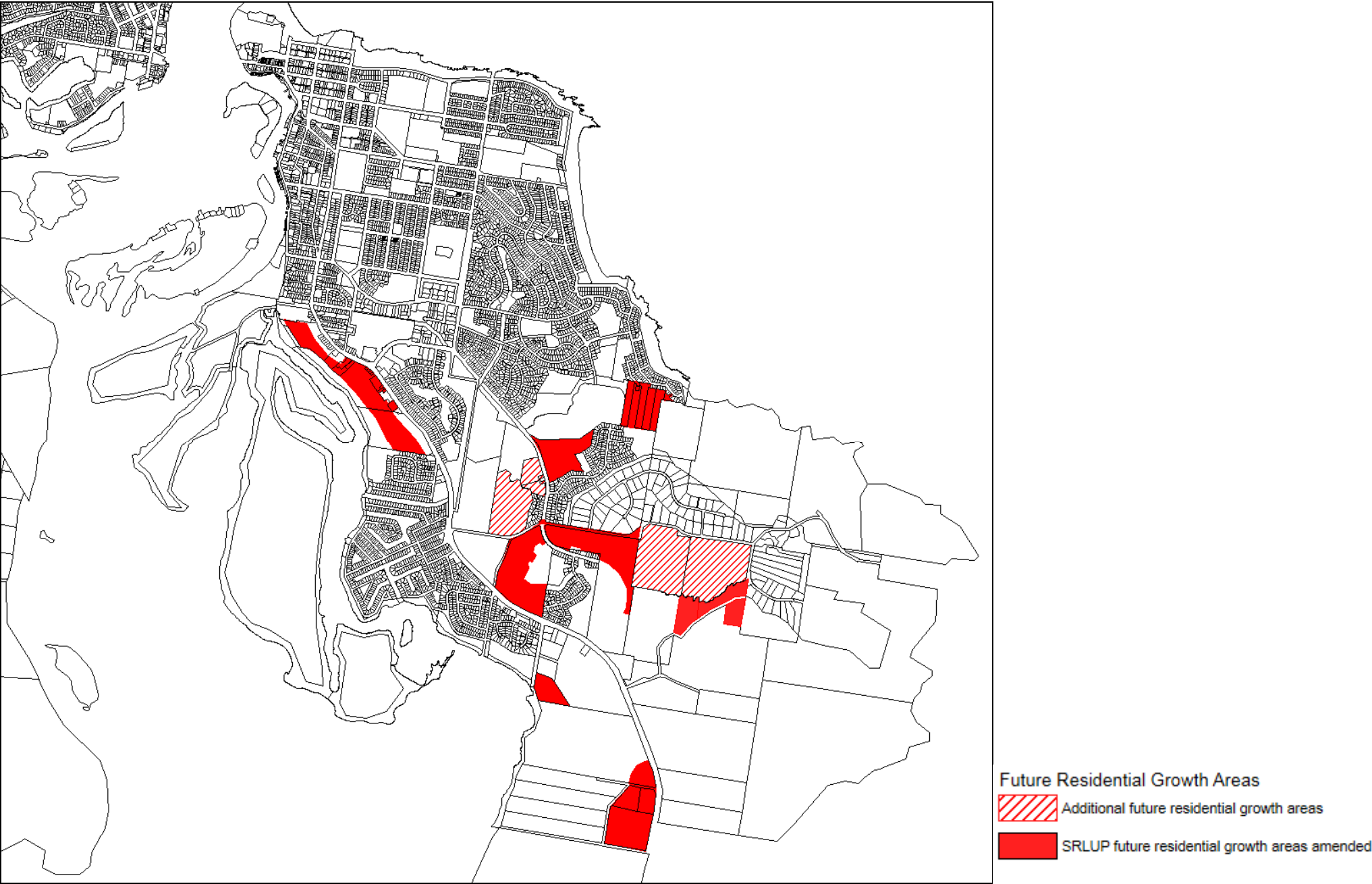
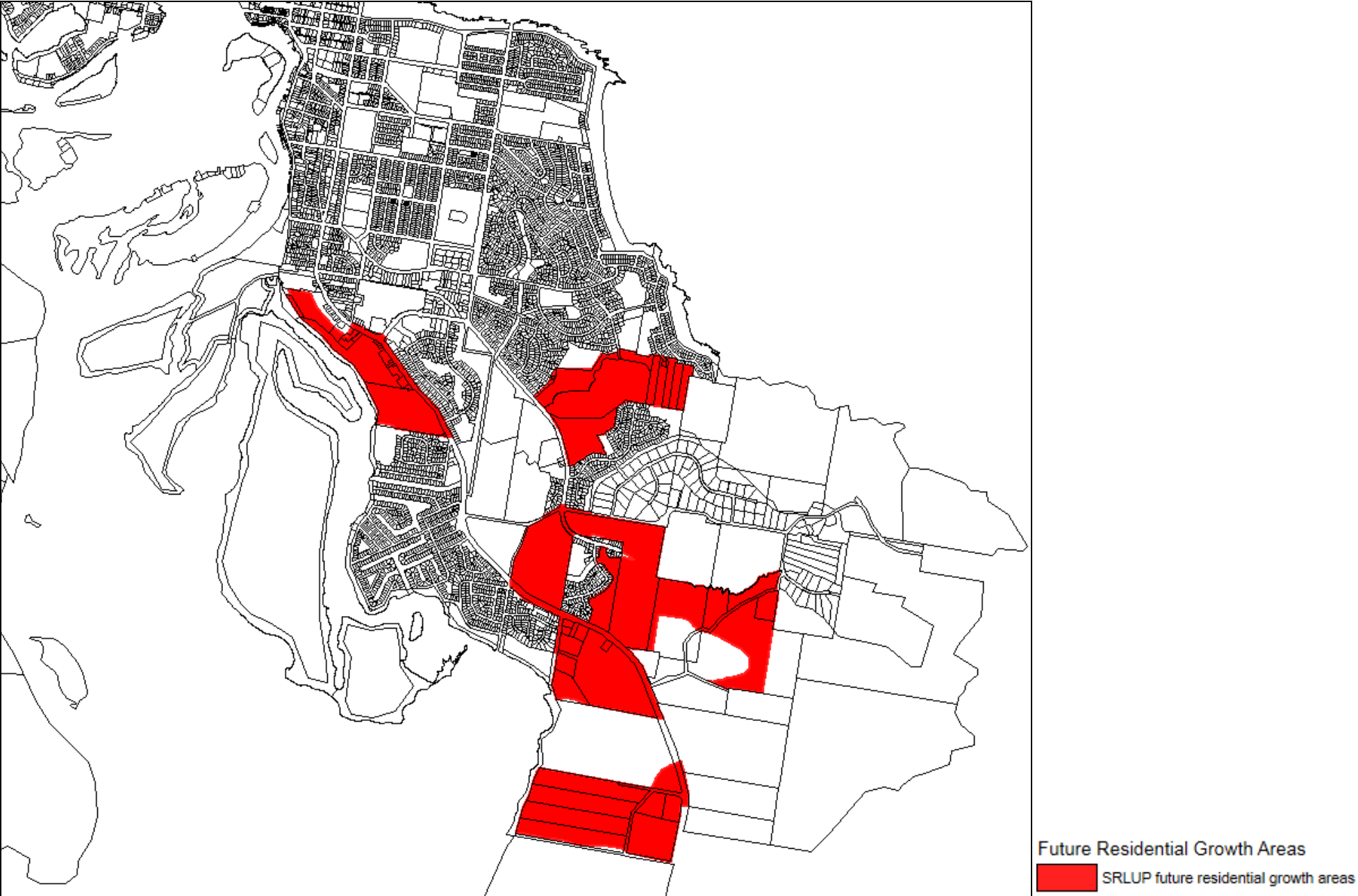
Tuncurry



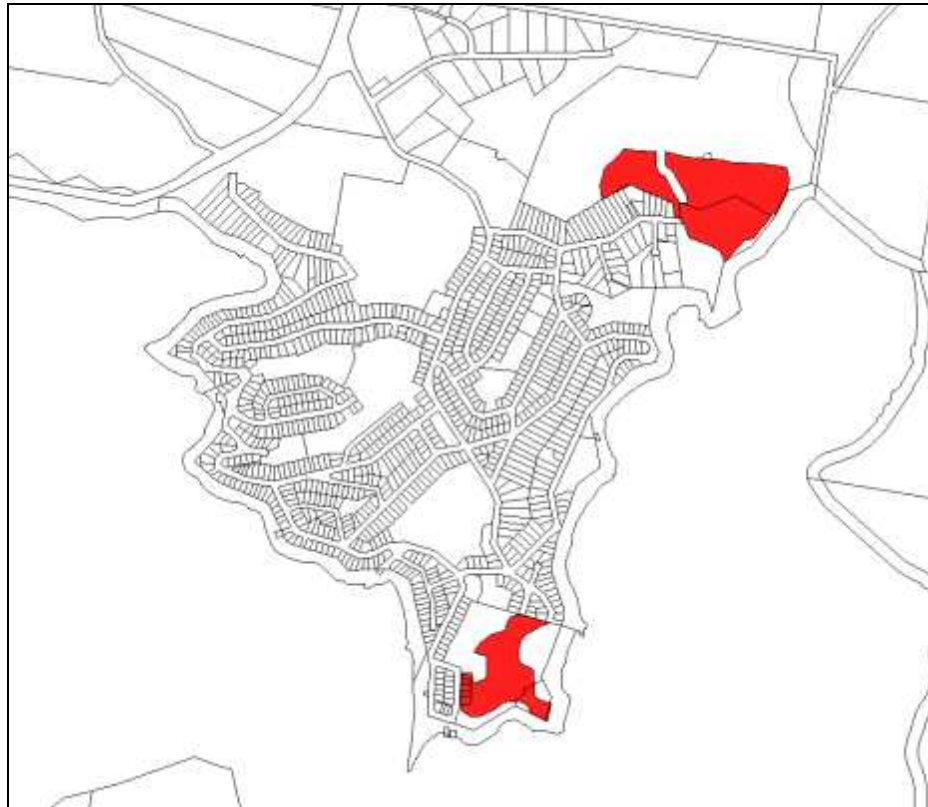
 SRLUP future residential growth areas




 SRLUP future residential growth areas amended



Smiths Lake

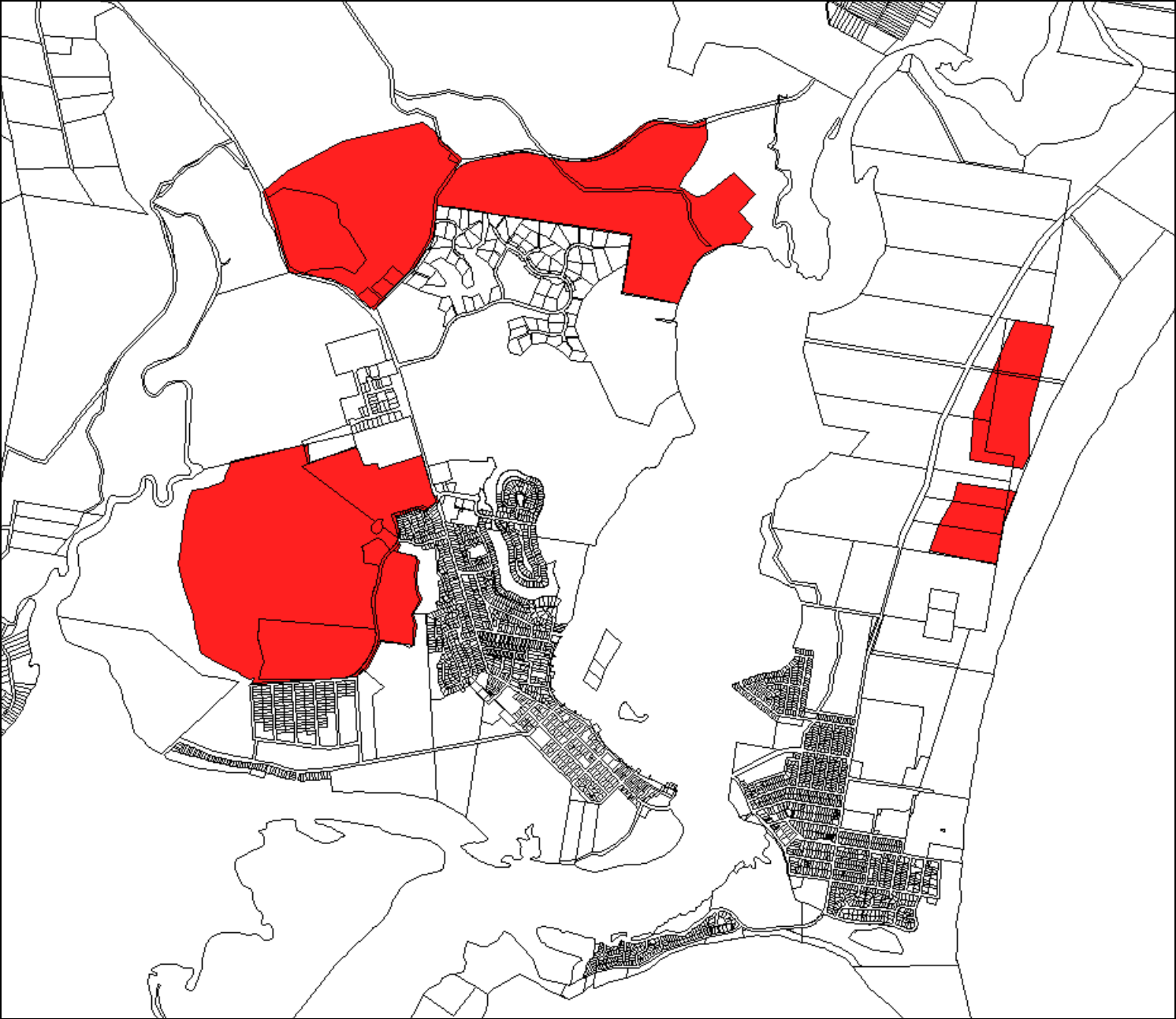


 SRLUP future residential growth areas



Residential growth areas have been rezoned:
2 Village,
7(a1) Environmental Protection Zone

Tea Gardens and Hawks Nest



Future Residential Growth Areas

■ SRLUP future residential growth areas

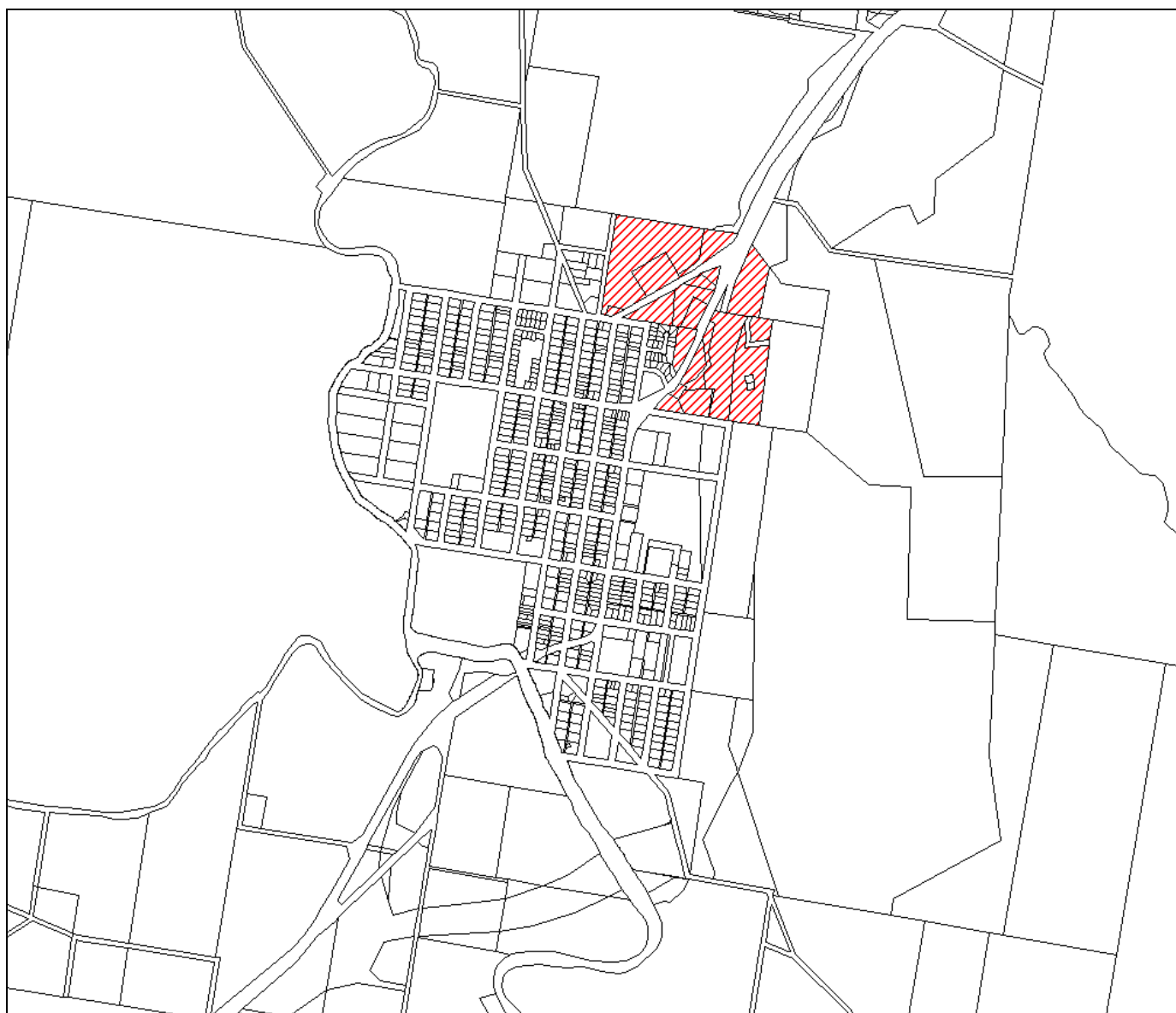


Future Residential Growth Areas


▨ Additional future residential growth areas

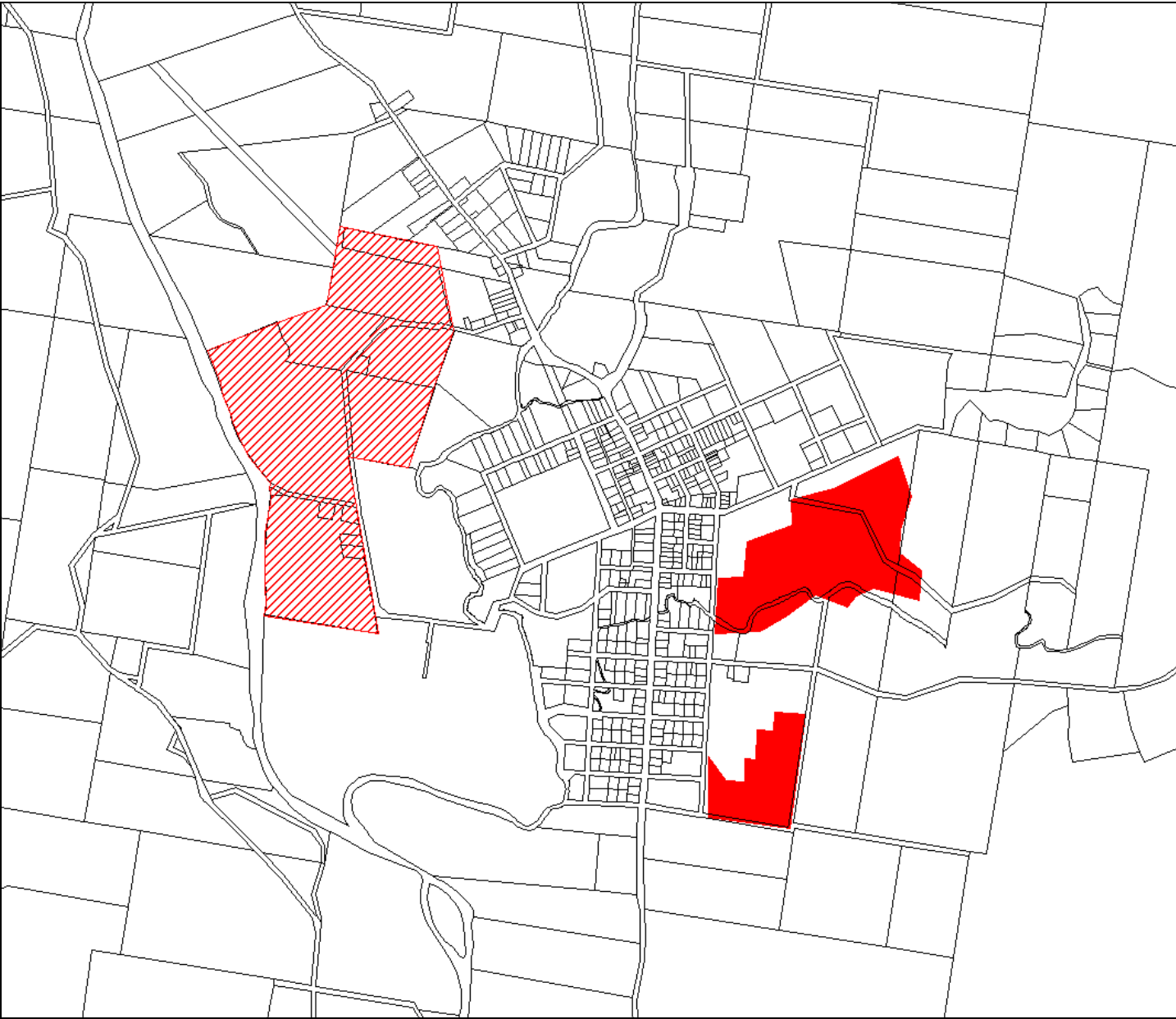
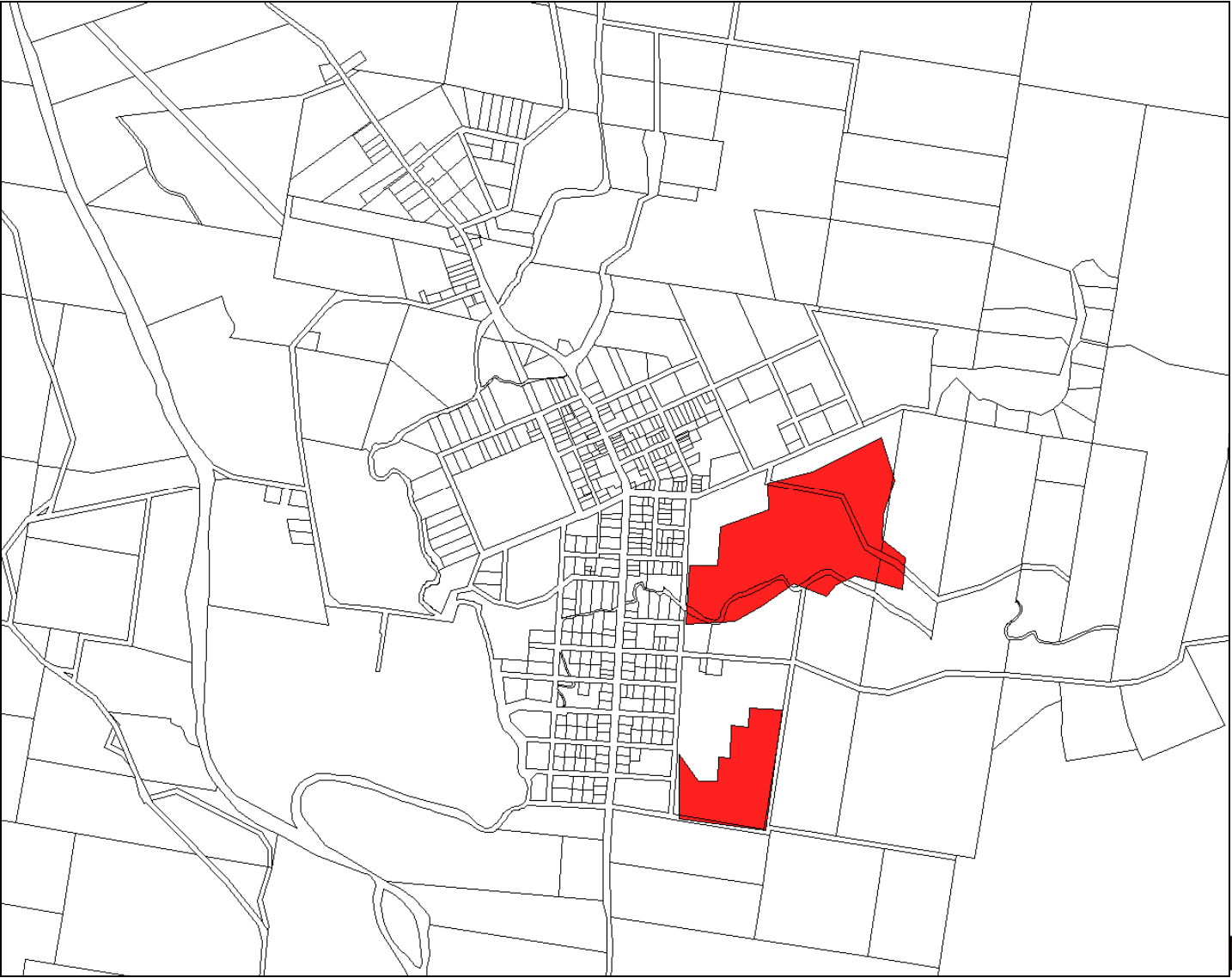
■ SRLUP future residential growth areas amended

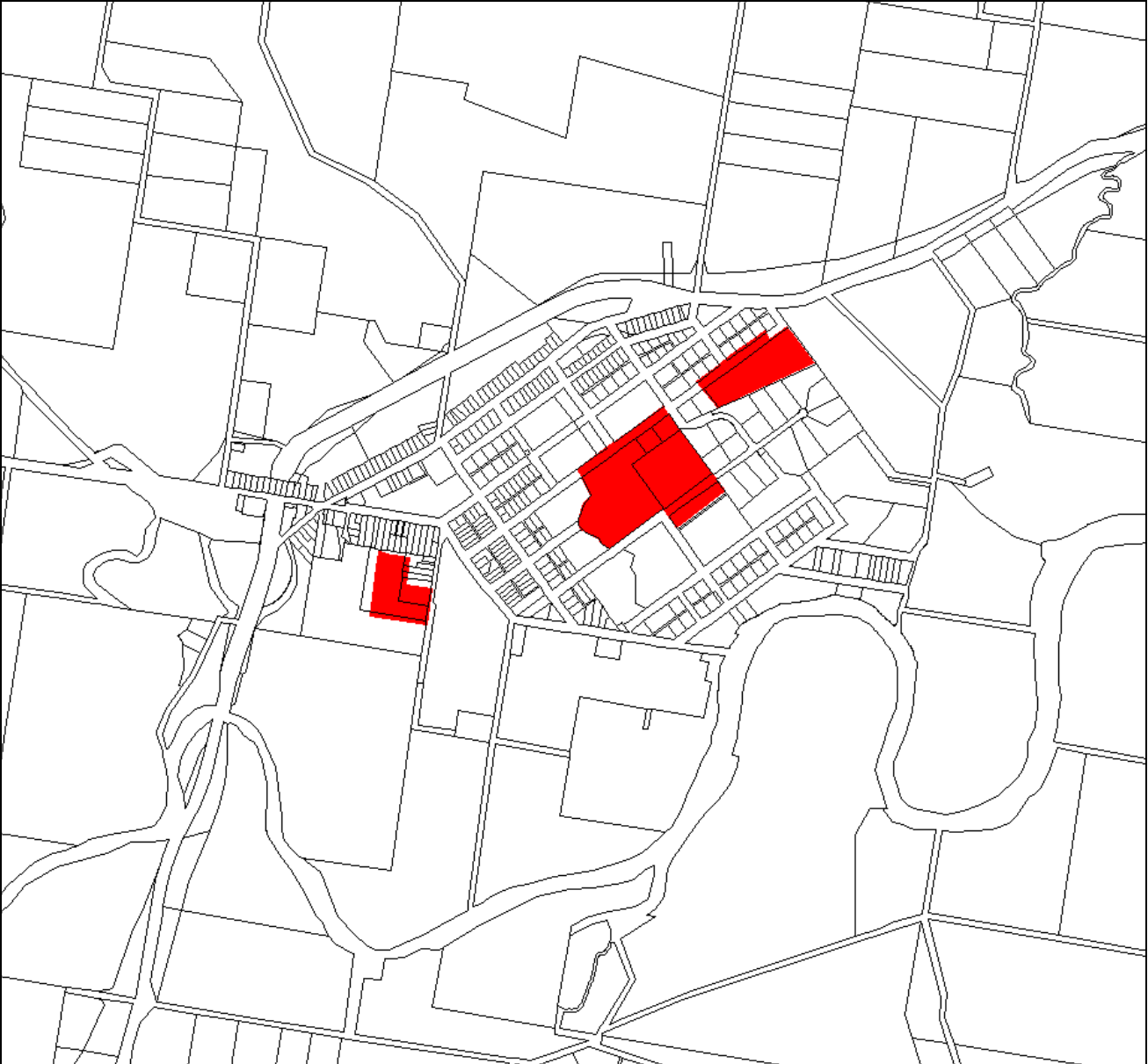
Bulahdelah




Future Residential Growth Areas

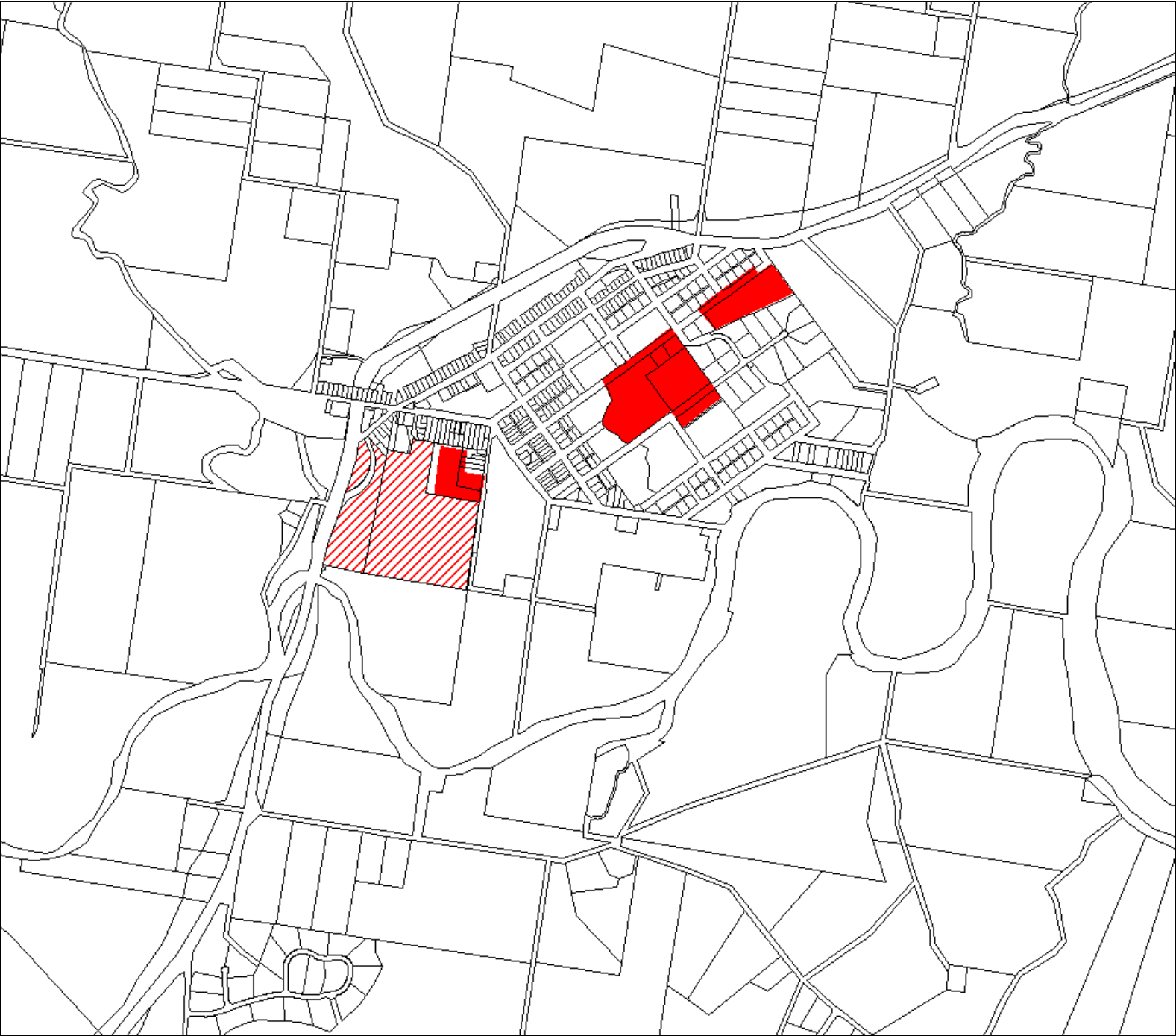
 Additional future residential growth areas







Future Residential Growth Areas

 SRLUP future residential growth areas

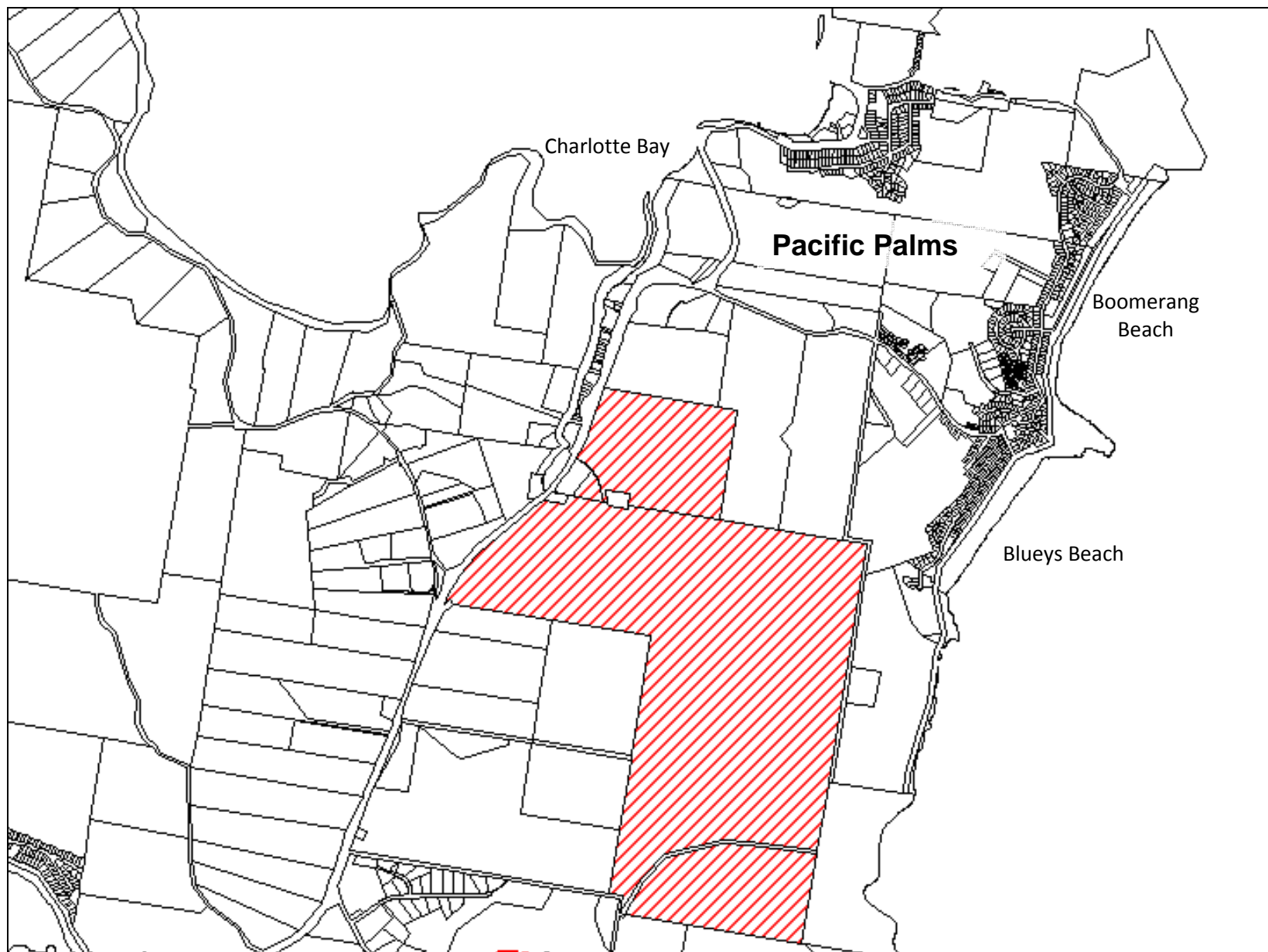



Future Residential Growth Areas

 Additional future residential growth areas

 SRLUP future residential growth areas amended

Charlotte Bay



 Additional future residential growth areas